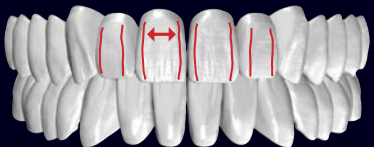







Digital Denture - 100 % your way

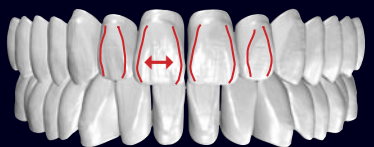
artegral<sup>®</sup> Life  
**PreSets**





### C-Form



CL	① 49,2	
	② 12,0	
	③ 8,8	
	④ 40,0	
	⑤ 35,0	
CM	① 46,4	
	② 11,0	
	③ 8,3	
	④ 39,0	
	⑤ 34,5	
CS	① 43,3	
	② 10,3	
	③ 7,7	
	④ 36,0	
	⑤ 32,5	

### B-Form



BXL	① 53,6	
	② 13,0	
	③ 10,0	
	④ 45,5	
	⑤ 38,1	
BL	① 49,9	
	② 11,6	
	③ 9,3	
	④ 41,5	
	⑤ 36,0	
BM	① 47,2	
	② 10,8	
	③ 8,8	
	④ 39,5	
	⑤ 35,0	
BS	① 43,6	
	② 10,2	
	③ 8,1	
	④ 36,0	
	⑤ 32,5	

# 120 PreSets for your Full Denture

➤ 20 Formen  
Shapes  
Forme



➤ 3 Kieferweiten  
Jaw widths  
Larghezze arcata

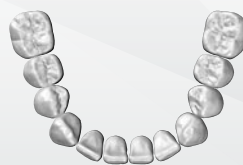


narrow

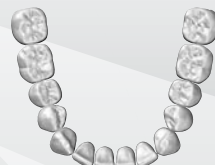
medium

wide

➤ 2 Zahnaufstellungen  
Tooth set-ups  
Montaggi



6-6 (first molar)



7-7 (second molar)

## BO-Form



**BOL**

- ① 49,4
- ② 12,0
- ③ 8,9
- ④ 40,0
- ⑤ 35,0



**BOM**

- ① 46,8
- ② 11,6
- ③ 8,4
- ④ 38,0
- ⑤ 34,0



**BOS**

- ① 43,9
- ② 10,8
- ③ 7,9
- ④ 36,0
- ⑤ 32,5



## I-Form



**IXL**

- ① 53,6
- ② 13,2
- ③ 9,9
- ④ 44,5
- ⑤ 37,6



**IL**

- ① 47,0
- ② 12,5
- ③ 8,8
- ④ 39,5
- ⑤ 35,0



**IM**

- ① 44,4
- ② 11,2
- ③ 8,3
- ④ 37,5
- ⑤ 33,0

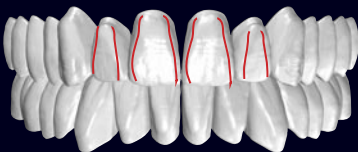


**IS**

- ① 41,8
- ② 10,8
- ③ 7,8
- ④ 34,0
- ⑤ 31,0



## BI-Form



**BIL**

- ① 50,0
- ② 12,5
- ③ 9,3
- ④ 41,0
- ⑤ 36,0



**BIM**

- ① 47,4
- ② 12,0
- ③ 8,8
- ④ 39,0
- ⑤ 34,5



**BIS**

- ① 44,3
- ② 10,8
- ③ 8,3
- ④ 36,5
- ⑤ 33,0



## IT-Form



**ITL**

- ① 48,1
- ② 12,0
- ③ 8,8
- ④ 39,0
- ⑤ 34,5



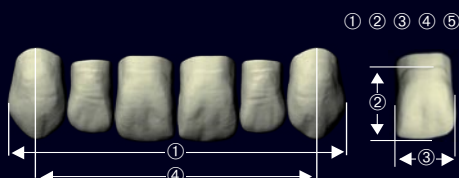
**ITM**

- ① 45,0
- ② 11,3
- ③ 8,2
- ④ 37,5
- ⑤ 35,0



**ITS**

- ① 41,9
- ② 10,7
- ③ 7,7
- ④ 34,0
- ⑤ 32,5



Toleranz  
Tolerance / Tolleranza  
± 1,5 %





## de Zahndatenbanken

- Für eine einfachere, schnellere und effizientere digitale Totalprothetik
- 120 bereits in Okklusion aufgestellte Zahnreihen für die CAD-Konstruktion und Fertigung inkl. Individualisierungsoptionen je Zahn oder Zahngruppe, einzeln oder synchron, in Achs- sowie Raumrichtung
- Herausragende Merkmale des artegral® life, wie die Körperhaftigkeit natürlicher Zähne und die universelle Funktion, aufbereitet für den digitalen Fertigungsprozess
- Aufstellung in 3 Bogenweiten und 2 Set-Ups nach der Philosophie des <sup>BD</sup>Load®
- Digitale Repositionierung der kompletten Zahnreihe oder einzelner Zähne
- Daten in High-Resolution Auflösung für eine anschließende präzise und passgenaue Fertigung
- Verschiedenste Produktionsmöglichkeiten: z. B. Zwei-Schritt-Fräsen, 3D-Druck von Basis und Zähnen, monolithisch gedruckte Prothesen für z. B. Einproben, oder die Kombination mit den artegral® life Zähnen und der Ergänzung der funktionellen Eigenschaften durch die farbliche Brillanz, Ästhetik und Natürlichkeit des Zahns.

## en Tooth libraries

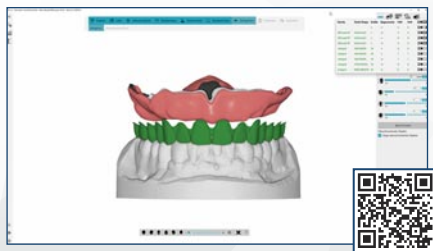
- For easier, faster and more efficient digital dentures
- 120 ready-to-use full denture tooth set-ups in occlusion for both CAD design and manufacture process including individualization options for each tooth or tooth group, individually or synchronously, in axis and spatial direction
- Outstanding features of the artegral® life, such as the physicality of natural teeth and the universal function, prepared for the digital manufacturing process
- Set-up in 3 arch widths and 2 set-ups based on the <sup>BD</sup>Load® philosophy
- Digital repositioning of the entire row of teeth, individual teeth
- Data in high-resolution for subsequent precise production and accuracy of fit
- Various manufacturing options: such as two-step milling, 3D printing of base and teeth, monolithically printed dentures for example try-ins, or the combination with artegral® life teeth and the addition of functional properties through shade brilliance, aesthetics and naturalness of teeth

## it Librerie denti

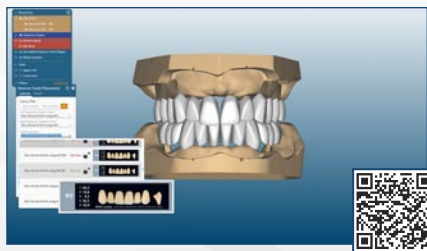
- Per protesi totali digitali più semplici, veloci ed efficienti
- 120 configurazioni arcate di denti già impostati in occlusione pronti all'uso sia per la progettazione CAD che per il processo di produzione, comprese le opzioni di individualizzazione per ciascun dente o gruppo di denti, individualmente o in modo sincrono, in direzione asse e spaziale
- Caratteristiche eccezionali dell'artegral life come dati fisici dei denti naturali e la funzione universale, preparato per il processo di produzione digitale
- Configurazione in 3 larghezze di arco e 2 configurazioni basate sulla filosofia <sup>BD</sup>Load®
- Riposizionamento digitale dell'intera arcata dentale o singoli denti
- Dati in alta risoluzione per una produzione precisa e massima accuratezza del fit
- Varie opzioni di produzione: come fresatura in due fasi, 3D stampa di base e denti, protesi stampate monolitiche utilizzabili come try-in o in combinazione con i denti artegral® life e l'aggiunta di proprietà funzionali attraverso la brillantezza del colore, dell'estetica e della naturalezza dei denti

Die artegral® life Zahndatenbanken sind verfügbar für: / The artegral® life tooth libraries are available for:  
Le librerie denti artegral® life sono disponibili per:

**BDCreator®**  
PLUS



**exocad**  
FullDenture Module



**3Shape**  
Dental System

